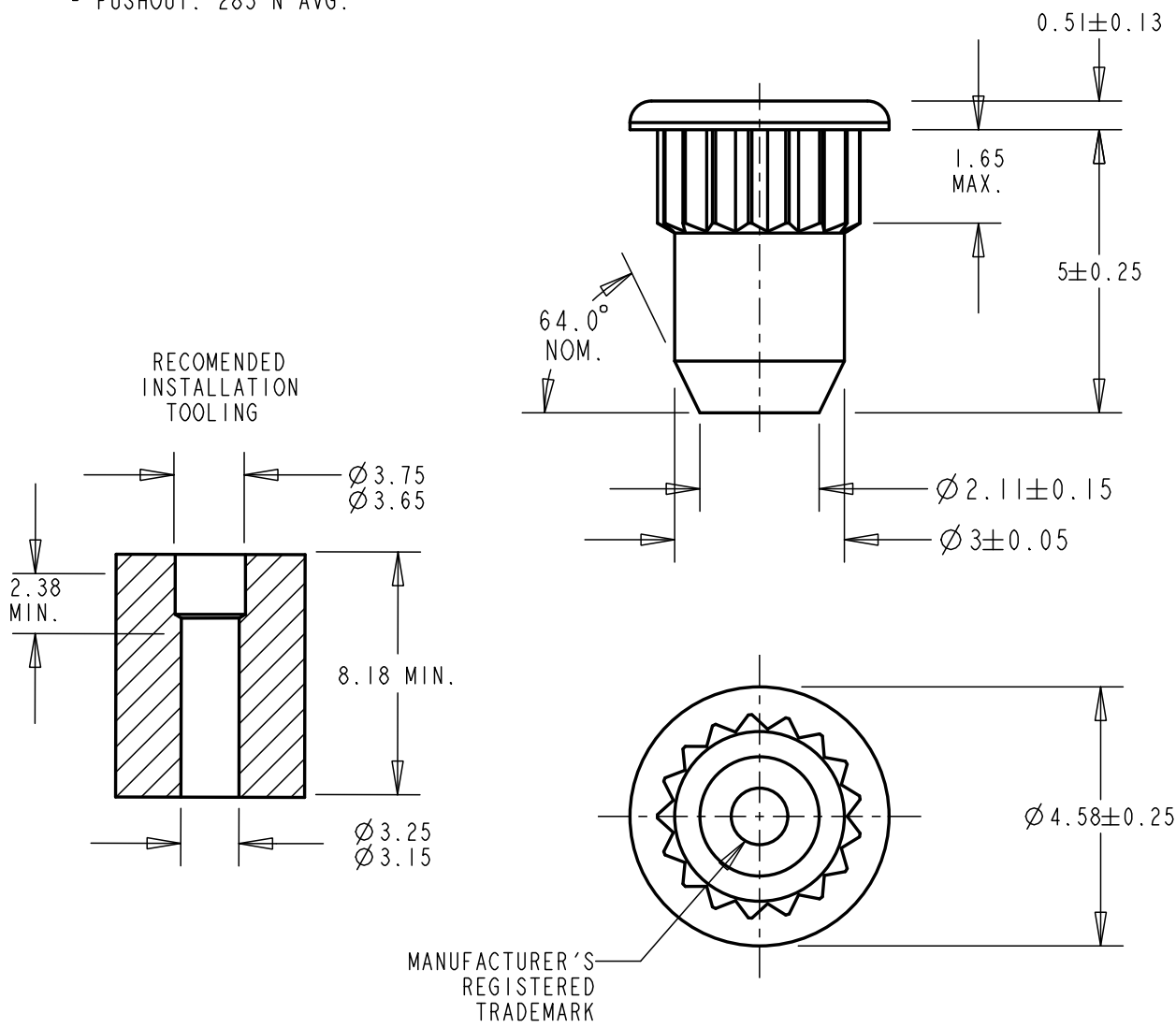




NOTES:

- PERFORMANCE WHEN PROPERLY INSTALLED INTO 1.53mm MIN. THICK FR-4 PANEL, WITH A MAX PANEL HARDNESS OF HRB 80 (HB 150)
- INSTALLATION FORCE: 1.8 kN NOM.
- PUSHOUT: 285 N AVG.



SEE PEM TECHNICAL SUPPORT SECTION OF OUR WEBSITE (WWW.PEMNET.COM) FOR RELATED STANDARDS AND SPECIFICATIONS.

© 2017 PennEngineering

NOTICE: CONFIDENTIAL PROPRIETARY INFORMATION. THIS PRINT CONTAINS IDEAS, INFORMATION, AND INTELLECTUAL PROPERTY WHICH ARE THE EXCLUSIVE PROPERTY OF PENNENGINEERING®. RECIPIENT MUST KEEP THE INFORMATION DISCLOSED HEREIN CONFIDENTIAL AND RECIPIENT IS EXPRESSLY PROHIBITED FROM COPYING OR PUBLICATION OF THIS PRINT EXCEPT TO OTHERS IN THEIR ORGANIZATION ON A NEED-TO-KNOW BASIS.

A	19-APR-2017	17-1317
REV	DATE	ECN #

ALL DIMENSIONS IN MILLIMETERS

THREAD:	N/A (NOT APPLICABLE)	MOUNTING HOLE:	3.1 ⁺⁰⁸ ₋₀₀
MATERIAL:	CARBON STEEL	PANEL THICKNESS:	1.53 MIN.
CONDITION:	HEAT TREATED	MAX. PANEL HARDNESS:	HRB 80 (HB 150)
FINISH/COLOR:	ZINC PLATED, 5µm, COLORLESS	MIN. CENTERLINE-TO-EDGE:	3.9
FINISH SPEC.:	SEE NOTE		
DESCRIPTION:	3MM, SELF BROACHING PIN, L=5		